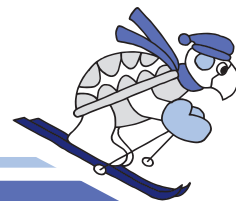


TURTLE GAZETTE



SLO Skiers Newsletter

July 2016

Mark Your Calendars!

July

Saturday 7/9

Hike in Montana de Oro State Park, meet at 9 a.m. at the Home Depot parking lot in SLO, or 9:25 a.m. at the Grocery Outlet parking lot in Los Osos to carpool to the Coon Creek trailhead

Wednesday 7/13

General meeting, 6–7 p.m. social hour, 7–8:30 p.m. meeting at Margie's Diner, 1575 Calle Joaquin, SLO

Friday 7/15

Bike ride in Avila, 9:30 a.m. at the Bob Jones trailhead, Ontario Road parking lot; no host lunch at Hula Grill in Avila

Saturday 7/16

Wine down, 4 p.m. at Carol and Spence Thatcher's home, 2888 Northview, Arroyo Grande

Wednesday 7/27

Concerts in the park, 5–8:30 p.m. at Templeton Community Park, 6th and Crocker Streets; bring a dish to share and a chair

August

Wednesday 8/3

General meeting, 6–7 p.m. social hour, 7–8:30 p.m. meeting at the Elks Lodge, 222 Elks Lane, SLO
(Note the location change!)

Friday 8/5

Bike ride in Avila, 9:30 a.m. at the Bob Jones trailhead, Ontario Road parking lot

August hike and wine down, TBA

September

Wednesday 9/7

General meeting, 6–7 p.m. social hour, 7–8:30 p.m. meeting at the Elks Lodge, 222 Elks Lane, SLO

Friday 9/9

Bike ride in Avila, 9:30 a.m. at the Bob Jones trailhead, Ontario Road parking lot

Monday 9/26

Celebrate Marvin Gross' hike up Half Dome, 8–10 p.m. at Yosemite National Park (exact location TBA)

September hike and wine down, TBA

October

Saturday 10/29

Turtle Auction, time TBA at SLO Grange Hall, 2880 Broad Street, SLO

November

Saturday 11/12

Pray for Snow Dinner Dance, 5:30 p.m. at the Madonna Inn, 100 Madonna Road, SLO

December

Friday 12/9

Christmas Party, time TBA at SLO Grange Hall, 2880 Broad Street, SLO

February

Saturday–Sunday 2/11–19

Ski week at Whistler, British Columbia

March

Tuesday–Tuesday 3/14–21

Ski week at Whitefish, Montana



SLO Skiers, Inc.

A Ski, Sport and Social Club
www.sloskiers.org

PO Box 1047
San Luis Obispo, CA 93406

Meetings the second Wednesday
of the month at Margie's Diner

Inside this month's Gazette:

Upcoming events:

Concerts in the park (p. 3)
July wine down (p. 3)
Yosemite camping trip (p. 4)
2017 ski weeks (p. 5)
Summer bike rides (p. 7)
June hike (p. 8)
Sportfishing, BBQ & wine down
photos (p. 9–11)
Philanthropy update (p. 12)
Far West travel (p. 13)
Communication tips (p. 13)
President's Message (p. 14)

2016–2017 Directors & Officers

President

Barbara Collins, president@sloskiers.org

Vice Presidents

Julie Page & Steve Balog, vicepresident@sloskiers.org

Secretary

Stacey King, secretary@sloskiers.org

Treasurer

John Smith, treasurer@sloskiers.org

Finance

Bonnie Long, finance@sloskiers.org

Membership

Teresa Rice, membership@sloskiers.org

Communications

Fran Long, webmaster@sloskiers.org

Newsletter

Kara Edwall, newsletter@sloskiers.org

Week-long Trips

Lauren Nagle, trips@sloskiers.org

Ways & Means

Helen Jacobsen, ways@sloskiers.org

Philanthropy

Michael Krebsbach, philanthropy@sloskiers.org

Club Photographer

photo@sloskiers.org

Past President

Fran Long

Publicity

Pete Sarafian, publicity@sloskiers.org

Upcoming Event Details

July Wine Down



Saturday, July 16th, 4 p.m., Carol and Spence Thatcher's home
(2888 Northview, Arroyo Grande; please park on the street)

Watch the sunset over the ocean and the dunes! Bring something to share (appetizer, salad, dessert, casserole), something to drink (water, soda, beer, wine) and a light jacket.

Concerts in the Park

Wednesday, July 27th, 5–8:30 p.m., Templeton Community Park
(Located at 6th & Crocker Streets)

Listen and dance to the music of Bear Market Riot (Kirk Nordby and Nick Motil). Bear Market Riot is power-folk and American music duo from the Central Coast. They blend everything from folk to hip-hop into an infectious sound that will keep a full dance floor satisfied.

Look for the SLO Skiers banner! Bring a dish to share, low-back chair, blanket to sit on, and sweater or jacket (it can get cold!). Questions? Call Diane Mandala at (805) 720-1555 or email dianemandala@charter.net.



This year we are going to try something different.

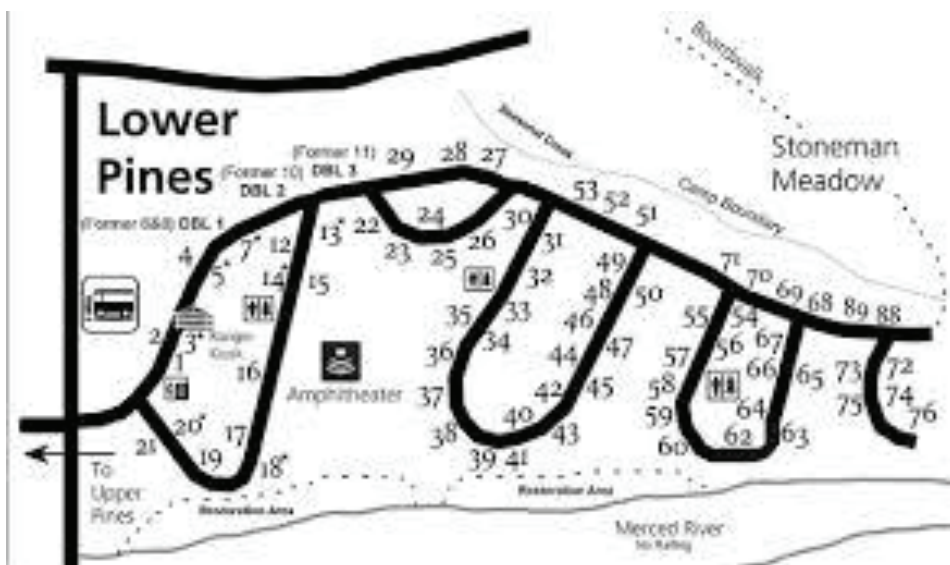
A group camp trip to Yosemite. Sunday, September 25th.

Each of you have different ideas of what you works for your camping trip. I, personally, take my RV. Some of you prefer, housekeeping tents. For the non campers in the group there are hotel options available. To be sure each of you gets what makes you happy you can make your own reservations. Take some time to look over the Yosemite Park website . There are specific restrictions due to the popularity of the park.

How to make your reservations: ON THE WEB, GO TO: RECREATION.GOV, **MAY 15TH 7 AM**
LOWER PINES CAMPGROUND, CALIFORNIA, CHECK AVAILABILITY, LOOP: LP
Remember to adjust your clock accurately, start the reservation process and be ready to “Book These Dates” the moment the on-sale begins at 7 AM.

Yosemite National Park differs from most of the campsites on Recreation.gov because the park releases a block of reservations monthly. Yosemite's reservable campsites are available up to five months in advance on the 15th of each month. The FIRST DATE you can book reservations for September 25th is on **May 15th at 7:00 AM**. I suggest you go to the site prior to May 15th and have several site options available. The map below is for the suggested campground. It is near Curry Village (now called Half Dome Village). It has both tent and RV spaces ranging in length from 24 feet to 40 feet. Those of you who don't like tent camping have options. There are a few hotel rooms in Half Dome Village. They are small wood cabins with a bathroom called Yosemite Cabins or Stoneman Cottage rooms with private baths. The same website contains heated and non-heated 4 man tents. On the luxury side, the Ahwahnee (now known as the **Majestic Yosemite Hotel**) is nearby. <http://www.travelyosemite.com/lodging/the-majestic-yosemite-hotel/>The hotel is rated 4 diamonds. The room price reflects the location and grandeur of the property. Another hotel option is **Yosemite Valley Lodge**. <http://www.travelyosemite.com/lodging/yosemite-valley-lodge/>. This hotel is less expensive but farther away from the group campsites.

The following siites are specifically for rv's: # 47 (27'),# 50 (40') ,#51 (27'), #52 (27')m #64 (27'), #71(27'),#DBL1 (35'), #DBL2 (35'), #DBL3 (35'). The DBL sites can have up to 12 people/site. The other sites accommodate 6 people.



QUESTIONS?...CONTACT LAUREN AT mlnskier@gmail.com

2017 Trip Update: Whistler and Whitefish







February 11th–19th: Whistler. Sign-ups start at the August meeting. Space is limited. We will be flying via Air Canada out of LAX on Saturday, February 11th. This year if you don't fly with the group you will be responsible for securing your own transfers from the airport to the resort. Our chartered bus from Vancouver to the resort (about two hours) will be filled by people with our air seats. We were only able to secure 46 air seats. On the way to Vancouver we will enjoy a welcome dinner. You will arrive at Hotel Listel around 8:30 p.m. Hotel Listel is a 3-star boutique hotel. It is conveniently located right in the Whistler Village. It is a short walk to the two major lifts to both Whistler and Blackcomb Mountain, as well as the market and liquor store. The rooms have free wi-fi, daily housekeeping, mini fridge, coffee/tea maker, hair dryer, free local calls and LCD 37" TV. Included in your package is a daily continental breakfast.

You will enjoy 5 days of skiing at two of the top-rated ski mountains in North America. Non-skiers can enjoy several unique options. I am still awaiting a few more details for the total package pricing. It will be under \$1,625. As an added attraction on Saturday the 18th of February we will be transferred from Whistler Village to the beautiful town of Vancouver. Here you will check in for the night at the Hotel Listel, located at the Marina. You will have several hours to tour the town of Vancouver on your own. That evening we will board a ship for a farewell dinner/dance cruise around the Vancouver harbor. The boat can accommodate up to 90 people. If you have friends or relatives nearby, we can arrange for them to join us on the ship for dinner and dancing. Watch Meetup for the package pricing. If you aren't on Meetup, contact Lauren at mlnskier@gmail.com (the second letter is a lowercase 'l', not a 1) so she can email you the details.

March 14th–21st: Whitefish, Montana. This is a Tuesday to Tuesday trip. We did this to save money on both the lodging and airfare. At the moment, our air seats are out of San Jose to Seattle and then on to Kallispel, Montana. From there it is a short transfer to the town of Whitefish. The mountain is a short shuttle from town. I am still whittling away the pricing. I am fairly confident we will be staying on the mountain in 2 bedroom/2 bath or 3 bedroom/3 bath condos. Included in your package will be the usual fun parties. You will have 5 days of lift tickets to explore the mountain. One of the really fun parts of skiing at this resort is the quaint town. It truly is a small mountain community with fun stores and restaurants. For the non-skier, there is Glacier National Park located nearby. The park in winter isn't crowded. The scenery is incredible. We are looking into a day tour of the park, perhaps on snowmobiles. Stay tuned for details. We won't start collecting deposits for this trip until September. Email Lauren if you have questions.

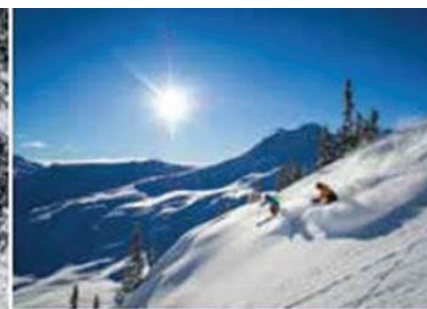


COMBINED MOUNTAIN STATISTICS	
Average Snowfall	458 Inches/38.2 Feet Per Year 11.64 Metres/1,164 CM Per Year
Total Terrain	8,171 Acres/3,307 Hectares
Trails	200 +
Whistler Village Elevation	675 Metres/2,214 Feet
Creekside Base Elevation	653 Metres/2140 Feet
Highest Lift Accessed Elevation	2,284 Metres/7,494 Feet
Number of Lifts	37
Hourly Lift Capacity	69, 939 Skiers Per Hour

INDIVIDUAL MOUNTAIN STATS	WHISTLER MOUNTAIN	BLACKCOMB MOUNTAIN
Vertical	1,530 Metres/5,020 Feet	1,609 Metres/5,280 Feet
Top Elevation	2,182 Metres/7,160 Feet	2,284 Metres/7,494 Feet
Skiable Terrain	4,757 Acres/1,925 Hectares	3,414 Acres/1,382 Hectares
Terrain Type	20%  / 55%  / 25% 	15%  / 55%  / 30% 
Trails	100 +	100+
Parks & Pipes	2 Parks	3 Parks, 1 Super Pipe, 1 Snow Cross Track
Total Number of Lifts	19 2 High Speed Gondolas 1 High Speed 6 Pack 6 High Speed Quads 2 Triple Chairs 8 Surface Lifts	17 1 High Speed Gondola 7 High Speed Quads 2 Triple Chairs 7 Surface Lifts
	CONNECTED BY 1 PEAK 2 PEAK GONDOLA	
Total Hourly Lift Capacity	36, 148 Skiers Per Hour	33, 791 Skiers Per Hour
Longest Run	11Km/7 Miles	11Km/7 Miles
Mountain Restaurants	8	9
Snowmaking	315 Acres/127 Hectares	350 Acres/142 Hectares

ON MOUNTAIN DINING	WHISTLER	BLACKCOMB
	Roundhouse Lodge Steep's Chic Pea Hut Harmony Hut Raven's Nest	Rendezvous Lodge Christines Horstman Hut Glacier Creek Lodge Crystal Hut
BASE MOUNTAIN APRES	WHISTLER	BLACKCOMB
	The Garibaldi Lift Co (The GLC) EBCB	Merlin's Bar The Wizard Grill
Whistler Creekside	Dusty's Bar & Grill Dusty's Backside	





whistlerblackcomb.com/groups


WHISTLER BLACKCOMB

Summer Bike Rides

Our second summer bike ride was on Friday, June 10th. Our energetic leader, Kathy Steele, met with the group at the beginning of the Bob Jones Trail on Ontario Road. One of the riders, John Long, wanted a longer ride and started from the Elks Lodge in San Luis Obispo. It was a wonderful day with an outdoor lunch at Woodstone Market. Some members, Janet Leonard and Janice Nanninga, met up with the riders at lunch. Thank you Kathy for volunteering to be the ride leader!

The next ride will be on Friday, July 15th. Meet at the Bob Jones trailhead parking lot on Ontario Road at 9:30 a.m., or at 10:45 a.m. for brunch at Hula Grill in Avila. Contact Barbara Collins at (805) 704-6572 or bacslo@charter.net.



June Trek
Confusing as Heck

For reasons I cannot explain,
The announcement turned into a pain.
Two went up Coon Creek,
Others went Point Buchon to seek,
But both groups had plenty to gain.

Marvin and Myra went east.
Pete and Peter headed south and were pleased.
Montana de Oro,
Led no one to sorrow,
Even though we all were teased.



(Pete Sarafian thought he announced to meet at the Home Depot parking lot at 9 a.m. and the Hagen parking lot in Los Osos at 9:25 a.m. The Meetup announcement doesn't reflect that. Marvin Gross and Myra Wapner arrived at the trailhead at 9 a.m.; Pete and Peter Jacobsen arrived at the same trailhead closer to 10 a.m. and went on the other trail.)

The July hike will be at Coon Creek in Montana de Oro State Park on July 9th. Meet at the Home Depot parking lot in SLO at 9 a.m. to carpool to Los Osos; or meet Pete at 9:25 a.m. at the Grocery Outlet parking lot in Los Osos (next to Rite Aid and just before the new Starbucks) to carpool to the trailhead.



Photo of Point Buchon coastline by Pete Sarafian.

Sportfishing with Hal was a success! Thank you Hal Rosewall for taking the club members out on the Patriot sportfishing boat on your birthday, June 15th. The club photographer has captured Hal in action with a fish on his line! It was a sunny day with a breeze so we were glad to have finished in the morning and returned before noon. It was great to have family members join our group. Congratulations to Gaye Peltzman for winning the largest catch of the day! Congratulations to Steve Ludwig for the second largest catch of the trip! They both caught large lingcod.



Thank you to June and Peter Ward for hosting the June BBQ! To our favorite June couple, June and Peter were both born in the month of June. They live not too far from this beautiful Shell Beach park off of Spyglass Drive. Peter is a past-president of the SLO Skiers and enjoys making this a special day for the club. They had help for supplies from Nancy Brown and the BBQ fire for the fish BBQ by Jeanne Kinney. It was a beautiful day at Spyglass Park!



Thank you Stacey King for a wonderful a wine down! It was a relaxing summer evening at your home in San Luis Obispo. In her secluded backyard, members drew prospective plans for Stacey's backyard remodel. With the drought in California, special emphasis on drought-tolerant plants and water conservation were discussed. Some plans included areas for relaxation such as a conversational fire pit or an area for a water fountain.



Philanthropy Update:

It was a Great Philanthropy Year for SLO Skiers

The 2015–2016 philanthropy year was a great one for SLO Skiers. We made donations in all our categories of interest—human, animal, environmental/conservation and skiing. By category we gave to:

Human: The Food Bank of SLO County, RISE and The Assistance League of SLO

Animal: Woods Humane Society

Environmental/Conservation: The Land Conservancy of SLO County

Skiing: Disabled Sports Eastern Sierra

We also defined our philanthropy program with guidelines and created a process for members to make donation recommendations to the Board of Directors. In addition to our financial contributions members collected 159 pounds of soaps and lotions that were shared equally with the Maxine Lewis Homeless Shelter (MLHS) in SLO and the El Camino Homeless Organization (ECHO) in Atascadero.

We are off to a great start for our 2016–2017 giving year. We've already collected and donated 33.5 pounds of soaps and lotions which have been split equally with MLHS and ECHO. The 2016–2017 philanthropy year will be another great one because of the generosity of SLO Skiers.

From Michael Krebsbach, Philanthropy Officer



Lauren Meers, Development and Outreach Manager of The Land Conservancy, receives the SLO Skiers donation from Michael Krebsbach (photo by Pete Sarafian).

Far West Adventure Trip 2016

Are you wondering what to do for a trip this fall? Why not join us on an adventure trip? The 2016 Far West Adventure Trip will be to England and Ireland September 12–22, 2016, with an extended bike tour in Ireland from September 22–26. If you haven't put this on your calendar yet, now is the time to do that. Your trip leaders, Debbie and George Stewart, have a phenomenal trip planned for you. The trip includes nightly accommodations and most meals. Tour London, see the Roman Spas, ferry to Rosslare, Ireland from the Welsh town of Fishguard; visit the Waterford Crystal Factory, climb Blarney Castle to kiss the Blarney Stone, see the Ring of Kerry, the Guinness Storehouse and try a pint; tour Dublin and much, more! For further information, contact Debbie at FWSAintltrlv@prodigy.net. You can view a short video by going to <https://www.dropbox.com/l/s/udeOiKPIUpM5Ng2K5DiyIt>.

"The Voice of the Western Skier"



Far West Dive Trip 2016

SPOTS STILL OPEN! Far West is going to Fiji, September 24–October 1, 2016. We will be at the amazing Beqa Lagoon Resort, and/or October 1–October 8 at a second resort (yet to be secured). Register for either week or stay for both weeks. The land and dive package for Beqa Lagoon Resort is \$1916 (double occupancy), and roundtrip air from Los Angeles into Nadi, Fiji is \$1,578 per person. Cyclone Winston resulted in insignificant damage to Beqa Lagoon, with only minor landscape damage, which has already been cleaned up and they are operating at 100% capacity again. For other information, contact Randy Lew, your dive trip leader, at fwsa13randy@telis.org.

News You Can Use

Communication is Key

By Fran Long, Communications Director

RSVP'ing on Meetup has been very helpful for most of our ski club events. It is wonderful to have a sense of how many to expect if you are the one planning a BBQ in the park, a wine down at your house, the Christmas Party, the Turtle Auction, etc. Please, keep doing that! It is going well.

Once you have RSVP'ed, we all know things happen. On occasion, we find we cannot attend after all. If you find yourself in that situation, please go to Meetup and change your RSVP to a 'no'. If the RSVP deadline has past, either call or send an email to the event organizer. Remember, that person has counted you in when setting out tables, chairs, food, drink, etc. We all appreciate this courtesy from our friends.

In the next couple of months, we will be adding a Meetup payment option to some of our events. You will have the option of paying online at the time you RSVP, or of RSVP'ing with the statement that your check is in the mail. This will make it easier for our event organizers, as well as for you. It will be important to pay attention to deadlines and cancellation penalties for these events. 'A reservation made is a reservation paid' so to speak. If you change your mind after a deadline, you will still be responsible for the event payment. Look for information regarding the payment option in the August Turtle Gazette.

Got questions about Meetup? Contact me if you need a little personal tutoring: fancat87@gmail.com.

President's Message



Hello SLO Skiers,

June was a busy month in San Luis Obispo County for SLO Skiers. Members rode bicycles on the Bob Jones Trail in Avila Beach with Kathy Steele as our volunteer leader, hiked Montana de Oro with Pete Sarafian as our State Park volunteer, went sportfishing with Hal Rosewall as our master fisherman, enjoyed a beach BBQ sponsored by our favorite couple, June and Peter Ward, as well as attended an evening wine down at Stacey King's home, our SLO Skier of the Year. Many thanks to these members for volunteering their time and energy in making each event fun and memorable.

Also in June, Lauren Nagle, Fran Long and I attended the Far West Ski Association 84th Annual Convention in Scottsdale, Arizona. The Far West Ski

Association is a non-profit organization that supports snowsport enthusiasts by providing benefits, programs and activities to their nine regional ski councils, which represent more than 150 clubs and a combined membership of over 50,000 skiers and snowboarders throughout the western United States. Their annual convention brings together representatives from various ski resorts to provide exceptional options for ski vacations as well as provide information on various topics for guests to provide to their local ski clubs and organizations. Fran, Lauren and myself represented the Central Coast Ski Council at this event, where we not only attended information sessions such as 'Safety on the Slopes' and 'Building and Supporting your Club', but also connected with representatives who can procure our future ski vacations.

As you already know, our club is a group of athletic and adventurous adults who enjoy traveling, with a particular emphasis on our love for skiing. Since we cannot ski year-round in California, spring, summer and fall trips focus on camping and hiking adventures to our California state and national parks. Winter is thus spent traveling to our California mountains to enjoy snow activities. This year, the club is currently planning at least two week-long ski trips, the first in Whistler, British Columbia and the second to Whitefish, Montana. Lauren Nagle is currently hard at work planning both trips for our club, as it takes many weeks to make all the arrangements, including airlines, ski tickets, lodging, transfers and evening activities. I would like to thank Lauren for being our trip organizer and for all her time and effort in procuring an adventure of exceptional value, affordable services, and extremely high quality and fun!!

Respectfully,

Barbara Collins

Thank you to our ongoing supporters!

*Skiing, Snowboarding,
Backpacking, Climbing & Travel*



(805) 962-0049	(805) 543-1676
14 State Street	667 Marsh St.
Santa Barbara, CA	San Luis Obispo, CA

Questions or suggestions about the newsletter? Have something you would like considered for inclusion? Email Kara at kkedwall@gmail.com!

MIKE'S
Copy & Graphics

Mike Buckels
Owner

805.544.3625
Fax 805.543.2963

179 Granada Dr., Ste.2
San Luis Obispo, CA 93401

mike@mikescg.net